



The Tab

Warm Window® Insulated Shade System

The flat, clean look of the Tab shade offers an open canvas for your personal touch! Have fun with decorative borders, trim, embroidery or you could even use a pieced quilt top for your cover fabric. The Warm Window fabric adds the perfect fullness and crisp tailored folds. Steam-A-Seam 2 fabric fusing web tapes and sheets for appliqué make this a easy, enjoyable project that you can finish in an afternoon.

Before you begin you will need the following tools, supplies and measurements. Please read through the instructions completely before starting your project.

Tools:

- Measuring Tape
- Sharp scissors
- T-Square or long ruler
- Pencil
- Sewing Machine or Iron
- Screw Driver for Mounting

Supplies:

- Decorative Rod
- Warm Window Fabric
- Cover Fabric
- Thread or Steam-A-Seam 1/2" Tape
- Border Fabric (if desired)
- Magnetic Tape (if desired)

Measurements:

- Measure Window Opening
- Measure for Additional Length
- Measure for Additional Width

Key - WW: = Warm Window Fabric FW = Finished Width FL = Finished Length

STEP 1 - MEASURE YOUR WINDOW

The Tab Warm Window shade is constructed using an outside mount. Accurately measuring your window opening and deciding how the shade will operate (for example opening to the right or left side of the window or split down the middle for opening) are the keys to determining your finished shade length (FL) and finished width (FW).

Record the distance from left to right across the top of the window opening and then the bottom of the window opening to determine the width. If these measurements don't match exactly, your window is not square and you will use the larger measurement. Record the distance from the top of the window opening to the bottom of the right side and then the left side to determine the length again using the larger measurement if necessary.

The finished shade must extend at least 3/4" all the way around the window opening (adding 1 1/2" to the FW and 1 1/2" to the FL) but may extend farther depending on the location of trim and your preference. The bottom of the shade can rest on the sill, floor or may extend farther than the window opening if the sill is flush with the wall. The top of the shade may be any distance above the window opening that you desire. Determine your shade's FL and FW by adding any additional width and length to the window opening measurements.



Steam-A-Seam 2® Double Stick Fusible Web

Steam-A-Seam 2 Double Stick is a fusible web that is different than any other! It has a tacky repositionable adhesive (similar to a post-it note®) allowing you to temporarily stick your appliqué together making sure your placement is perfect before fusing permanently with your iron! Use the tapes for hems & seams, adding ribbon, trim & lace. The sheet packs & wider widths are ideal for mistake proof appliqué! Steam-A-Seam products are available at fabric & craft stores nationwide.

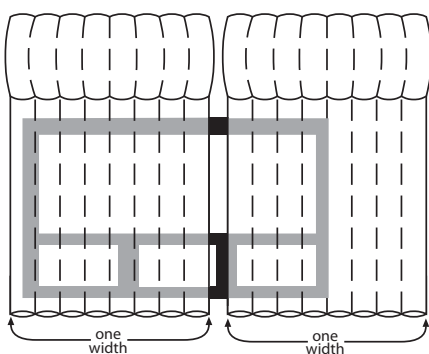
STEP 2 - CUT YOUR FABRICS

The channel lines of the WW fabric run vertically for the Tab Warm Window. The WW fabric is cut to the exact dimensions of your finished drapery. The cover fabric length will be cut to the finished length of your drapery plus 8" for the hems and you will add 5" to the finished width of your drapery cover fabric for the side seams. Before cutting the cover fabric or the WW fabric iron with a good steam iron to remove shrinkage. Ironing first will make your finished shade hang better as well.

Depending on the size of your finished shade, you may need to piece together the WW fabric or the cover fabric. Two or more widths are easily joined together at the channel lines when covering wider windows. Piecing cover fabric is also a simple process just remember if you're using a printed fabric you will need to make sure the pattern lines up. As always - measure twice - cut once!

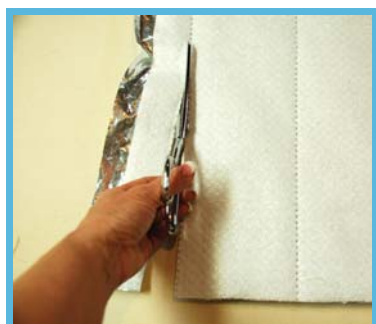
PIECING WARM WINDOW FABRIC FOR WIDER WINDOWS

Cut two or more widths of WW fabric a few inches longer than the FW of the shade. Once the WW fabric is pieced, you will cut it to the exact dimensions of your finished shade.



Sewing Method: Align the WW fabric lengths together at the outer most channel line with the drapery fabric sides together and pin. Machine stitch through all layers directly on the channel line. Using a walking foot will help as the fabric will be bulky and holding the fabric taut in front and behind the needle will also help prevent puckering. Trim to 1/4".

No-Sew Method: Peel and stick a strip of 1/2" Steam-A-Seam 2 to the outer most channel line on the drapery lining side of the WW fabric. Layer the other width drapery lining sides together at the channel line finger pressing for a temporary bond. Using plenty of steam, fuse the widths together following the instructions on the Steam-A-Seam 2 packaging. Trim the bonded drapery lining to the edge of the bond - 1/2" from the channel line and trim all of the other layers to 1/4" from the channel line.



Cut the WW Fabric

The WW is cut to the exact dimensions of the finished shade. Make sure that all additional length and width needed to clear trim or molding around your window is included in your finished dimension. Using a carpenter's square or a T-square align with channel line and mark a straight line the entire width of the WW fabric where you will trim creating a squared edge. From this edge measure to the FW, mark and cut. Mark and cut the FL starting at a full 4" channel line.

Cut the Cover Fabric

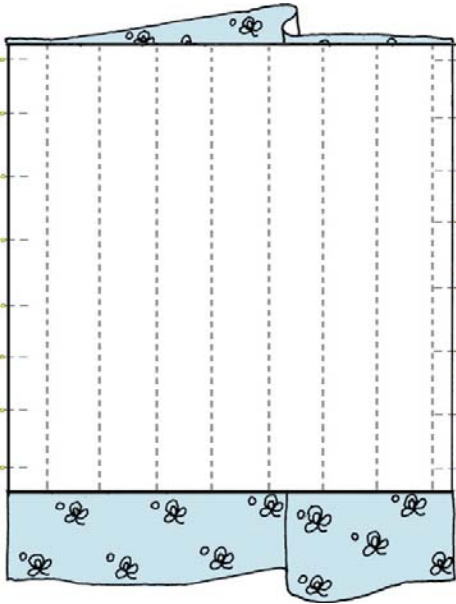
The cover fabric is cut to the finished dimensions of the Tab Warm Window plus 8" added to the length and 5" added to the width. Square off the cover fabric using a T-square or the carpenter's square. If piecing the cover fabric is necessary, sew using a 1/2" seam allowance or use Steam-A-Seam 2 fabric fusing web matching patterns when needed. Once pieced, square off, mark and cut. You will also need to cut a 3" wide strip of the cover fabric to finish the top. Cut this 3" strip 3" longer than the cover fabric width (FW + 5" + 3" is needed for the top). You will also need to cut cover fabric for your tabs. You will also need to cut tabs from your cover fabric. One tab is needed every other channel line. Each tab requires an 8" long by 5" wide piece of cover fabric.

Enjoy the Many Benefits of Warm Window Insulated Shades!

- ✓ Reduce Window Heat Loss Over 80%
- ✓ Reduce Solar Heat Gain Up To 79%
- ✓ Help Save Earth's Natural Resources
- ✓ Darken Rooms for Daytime Sleeping
- ✓ Reduce Noise Pollution from Outside Sources
- ✓ Decorate While You Insulate

STEP 3 - CREATE THE SEAMS & BOTTOM HEM

Create the seams for the right and left sides of the shade. Lay the cover fabric right side up with the WW fabric batting side up aligning the edges of cover fabric with the edges of the WW fabric. The cover fabric will align evenly with the Warm Window fabric at the top of the shade and extend 8" at the bottom. The cover fabric will not lay flat in the middle as it is 3" wider than the WW fabric. This excess is taken up by the side seams when the shade is turned right side out.



JOIN THE SIDE SEAMS -

Sewing Method: Pin cover fabric to the WW fabric. Using a half inch seam allowance sew a straight line making sure to catch all layers. A walking foot will help as this will be bulky. Use a heavy duty denim needle and a 3.0 stitch length. If a walking foot is not available holding the fabrics taut in front and behind the needle will help. Add continuous magnetic tape in the seam allowances if desired and turn right side out.

No Sew Method: Peel and stick the 1/2" wide Steam-A-Seam 2 fabric fusing web along the edge of the WW fabric. Finger press the cover fabric matching the edge to the edge of the WW fabric. Using a household steam iron fuse the cover fabric to the WW fabric. While there is no risk of overheating the Steam-A-Seam 2 it is possible to pucker or shrink the polyethylene vapor barrier. You may want to experiment with a scrap piece of WW fabric to adjust the time and temperature accordingly. Add continuous magnetic tape in the seam allowances if desired and turn right side out.

Maximum energy efficiency is achieved by adding the continuous magnetic tape in the seam allowance on both sides of the shade. Place the corresponding self adhesive continuous magnetic tape on the wall or trim sealing out drafts. If your Tab WW will join in the middle make sure that the magnetic strips will overlap in the middle by placing one length within the seam allowance and the other on the WW fabric side. The shade will magnetically seal out drafts in the center when the shade is closed.

"Warm Windows make a huge difference in our house during the summers. Rooms with Warm Window Shades are noticeably cooler!"

Janice Robinson, Portland, ME

BOTTOM HEM -

Sewing Method: Lay the shade front side down. We will turn up the 8" of cover fabric at the bottom of the shade to create the bottom hem. Fold the excess fabric in half to the bottom of the shade and press setting a crease. Fold up again. Pin and stitch down across the top and sides.

No Sew Method: Lay the shade front side down. Fold the excess cover fabric up to the bottom edge of the WW fabric and iron to create a crease. Peel and stick 1/2" Steam-A-Seam 2 across the top of the hem and the sides of the hem. Fold up again and fuse permanently following the instructions on the Steam-A-Seam 2.

Warm Window® Insulated Shade System

STEP 5 - MAKE TABS

Consider where you would like your shade to sit and adjust your tab length accordingly. You will need to make a tab for every other channel line. Determine the number of tabs needed. Follow the directions below to create your tabs from the 5" wide pieces of cover fabric you've already cut.

Sewing Method:



Fold the fabric in half right sides together. Sew together using 1/2" seam allowance.



Press the seam open using a yard stick placed through the sewn tie to prevent creases.



Sew across the open seam on one end. Turn right side out. Press flat centering the seam.

No Sew Method:

Place a strip of 1/2" Steam-A-Seam 2 on the right side of the cover fabric along the length of one entire edge. Place another strip of 1/2" Steam-A-Seam 2 across one end along the edge on the right side of the fabric. Fold in half lengthwise aligning the edges. The tie should be inside out. Fuse the entire length and end just on the 1/2" seam allowance you have created. Try not to press the fold causing a crease. Turn right side out. Iron flat with the seam in the middle of the back side of the tie.

STEP 5 - JOIN TABS TO SHADE



SEWING METHOD:

Fold the tabs in half with the seam to the inside. Pin a tab every other channel line across the top of the shade to the cover fabric side of the shade.

NO SEW METHOD:

Place a strip of 1/2" Steam-A-Seam 2 along the edge where the two halves meet when folded in half on the seam side. Fold in half evenly and press following the directions on the Steam-A-Seam 2 packaging.

STEP 6 - FINISH THE TOP



The 3" wide piece of cover fabric will be used to finish the top of the shade. Use your iron to create a crease that is 1/2" wide by the entire length of the fabric. This will give you a finished edge when turned to the back side of the shade. Center and align the raw edge of the 3" piece of cover fabric with the raw edge of the top of the shade right sides together. You will have 1 1/2" of extra cover fabric at each end to wrap to the back of the shade. Pin in place if sewing or stick in place if fusing. Sew using a 1/2" seam allowance or fuse using 1/2" Steam-A-Seam 2 following the instructions on the packaging.

Warm Window® Insulated Shade System

STEP 8 - FINISH TOP HEM



SEWING METHOD:

Fold facing over to the back side of the shade. A quick press now with your iron will set everything into position making it easier to pin and sew. Pin in place making sure that the creased fold remains folded underneath the cover fabric strip creating a finished edge. Sew using a top stitch along the edge of the fold. Press in place.

NO SEW METHOD:

Fold facing over to the back side of the shade. Press in place. Unfold and stick a strip of the 1/2" wide Steam-A-Seam 2 along the edge of the 1/2" fold that you pressed in place earlier. Fuse following the instructions on the Steam-A-Seam 2 packaging.

STEP 9 - DECORATE WHILE YOU INSULATE

Embellish your shade with accent banding to match your decor and complete your new look. In the DVD Pam has chosen a coordinating plaid fabric to create her accent banding. The plaid fabric is cut on the bias 5" wide to allow for a 1/2" fold on each side creating finished edges on both sides for a FW of 4". Double fold bias tape or hem tape is available at fabric stores nationwide in a variety of prints, textures and widths or it is easy to make yourself allowing you to choose your favorite fabric. Get creative and have fun!



Place a strip of Steam-A-Seam 2 - 1/2" tape along the edges and across the end of your double fold bias tape. Remove paper.



Starting at the bottom hem on the inside edge of the shade begin fusing your banding along hem line about 2 - 4" from the bottom.



Approximately 2" from the outside edge make a mitred corner by folding the banding onto itself. An extra shot of steam will set it.



Finished mitre above. Fuse banding all the way up to the top of the shade. Close end with a 1/2" fold for a finished edge and Steam-A-Seam 2.

STEP 10 - INSTALL

Mount your choice of decorative rods following the instructions on the rod packaging. Slip the rod through the tabs. Enjoy the new, beautiful, energy efficient Tab Warm Window knowing that you are saving money on energy, helping the planet and making your home more comfortable for years and years to come! Congratulations.

