

Coollest Cooler Tote

Supplies

½ yard prewashed main fabric

2/3 yard prewashed pocket & strap fabric

½ yard Insul-Shine

16 inch zipper

Coordinating thread



Step 1: Cut (2) 17 inch x 15 inch from your main fabric. Remove 2.5 inch squares from bottom corners and 1.5 inch Squares from top corners.

Step 2: Cut 2 pieces of Insul-Shine to the same size as main Fabric pieces. They will be the inner lining.



Step 3: Cut (2) 17 inch x 16 inch rectangles of your pocket fabric. This will be folded in half to create a lined 17 inch x 8 inch pocket on the front and back of the tote. For added visual appeal I then cut angles into the top side of my pockets. This is optional and won't change the assembly process.



Coollest Cooler Tote

Step 4: Cut (2) 3.5 inch x 25 inch strips of the same fabric used for the pockets to make the straps.

Step 5: With right sides together pin the pockets together along the top edge. Sew along top edge using a straight stitch and ½ inch seam allowance.



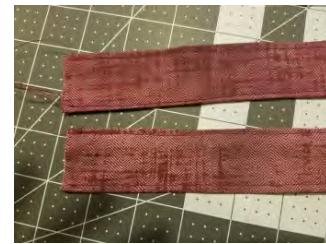
Step 6: Turn pockets right side out and top stitch closely along the seam.

Step 7: Lay the pocket on the right side of the main body piece. Line it up to the bottom of the wide part of the rectangle with the 2.5 inch squares cut outs on the bottom, and then move it up ½ inch. This allows for the seam allowance when sewing the boxed bottom.

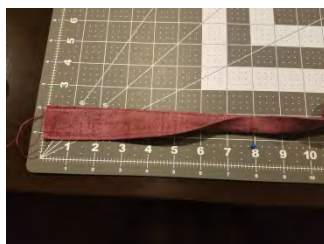
Step 8: Sew the pocket to the body piece using a top stitch along the bottom edge of the pocket. It is optional to sew a divider into your pocket by sewing a line down the middle of your pocket as well. Sew the other pocket onto the other body piece.



Step 9: Fold and pin the strap pieces in half lengthwise, right sides together. Stitch along the pinned edge. Using a safety pin, turn the straps right side out and top stitch along both edges.



Step 10: Fold the finished strap in half again and pin 8 inches from each end. Sew along the top stitches along the middle 9 inches of the strap (leaving 8 inches on each end open).



Cooler Tote

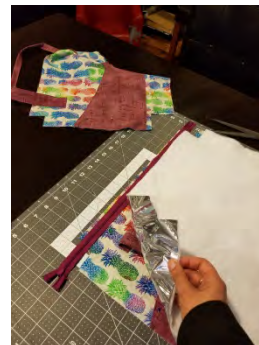
Step 11: Pin the straps hanging towards the bottom of the bag. Pin the straps 3 inches in from the side and 3 inches down from the top of the body piece. Sew $\frac{1}{4}$ inch from the top of the straps.



Step 12: Fold straps up and sew a box pattern to secure the straps in this position.



Step 13: Lay body piece and Insul-Shine piece together with right sides facing. Slide the zipper between the 2 pieces along the top edge with the good side facing the outer body piece. All three layers should be lined up flush. Using a zipper foot, stitch all 3 layers together.



Step 14: Flip tote pieces so they are wrong side together and zipper is coming out between them. Top stitch Insul-Shine and outer body piece together close to seam. Repeat steps 13 and 14 on other side.

Step 15: Before proceeding, unzip zipper half way. Please don't forget this step! Fold tote so that Insul-Shine layers are lying with right sides together, and outer pieces are laying right sides together. On outer body pieces sew sides and bottom together with $\frac{1}{2}$ inch seam allowance. At this point, do nothing with the square cut outs.



Cooler Tote

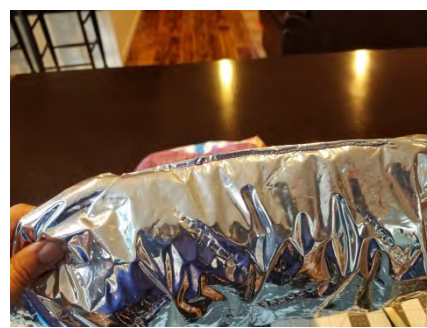


Step 16: Sew Insul-Shine layers together on the sides. Sew the bottom together, but leave a 6 inch opening in the middle. You will use this opening to turn the bag right side out a little later.

Step 17: Open the gap in the bottom of the tote where the 2.5 inch square was cut out. Pin it closed so that the side hem is lined up with the bottom hem. Using a $\frac{1}{2}$ inch seam allowance, sew across the opening, creating a boxed corner on the bottom of your tote. Repeat with other side and both bottom corners of Insul-Shine lining.



Step 18: Reach through the opening in the bottom of Insul-Shine and turn bag right side out. Fold in raw edged in the bottom of Insul-Shine and top stitch closed.



Cooler Tote

Step 19: Push the body of the tote inside the Insul-Shine lining (the tote is essentially inside out). Fold the top corners open like in Step 17. The zipper should be lined up with the side seam. Using a ½ inch seam allowance, sew across all layers to create a box corner on the top. Repeat with other side. Trim the zipper. Finish the raw edge using a zigzag stitch.



Turn the tote right side out and pack it full of everything you want to keep cold!



Care Instructions for the Cooler Tote

Simply wipe clean with a damp paper towel or cloth for day to day use.
If needed – hand wash with mild soap in cold water – air dry.