



Bento bag

lunch bag tutorial

● ● ● ● ● ●



Notes:

Read entire pattern before beginning. Seams are 1/2" unless otherwise noted. Backstitch at all start and stops. For the complete tutorial visit the blog @ rebeccamaedesigns.com



Materials & Tools:

quilter's ruler
rotary cutter
cutting mat

- 3/4 yard cotton canvas fabric (main exterior)
- 1/2 yard cotton canvas fabric (accent sides/trim)
- (2) 14" x 12" pieces of Insul-Bright
- 1/2 yard of ripstop nylon for lining
- 7" separating zipper
- Steam-a-Seam 1/4" tape
- 15" nylon strap for handle
- optional fusible interfacing



Optional: For a more structured bag, back both of the 10" x 12" pieces with fusible interfacing cut to 9 1/2" x 11 1/2" and the 5" x 9 1/2" pieces with fusible interfacing cut to 4 1/2" x 9". Center and fuse in place.

Cutting:

- **From the main exterior fabric cut:**
 - (2) 10" x 12" for the bag exterior
 - (2) 2 1/4" x 5" for the side pocket binding
 - (4) 3" x 10" pieces for the top zipper flaps
- **From the accent fabric, cut:**
 - (2) 5" x 9 1/2" for the bag sides
 - (2) 5" x 6" for the side pockets

Assembly:

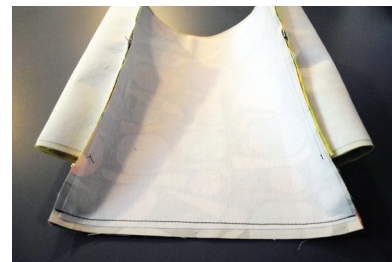
Sew the 2 1/4" x 5" binding strips to the top of the 5" x 6" pocket pieces. Match at 5" sides and sew a 1/2" seam. Press seam open. Turn raw edge under two times to the back of the pocket piece and covering stitching. Press and pin in place.

Turn to the front of the pocket piece and topstitch along edge of binding, catching the fold of the binding on the back side. I topstitched twice and used this Aurifil 12 weight thread to make it stand out and to be a little more decorative.

Place pockets on top of the side exterior pieces ~ align at the bottom edges and baste in place at sides with 1/4" seam.

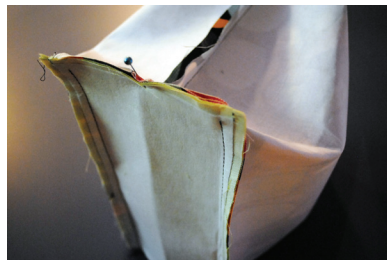
Align basted side units with the top edge of the main exterior piece and join with 1/2" seam. Press open.

Join second exterior piece, aligning at the top edge.

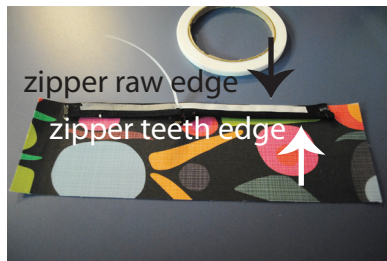


Assembly continued:

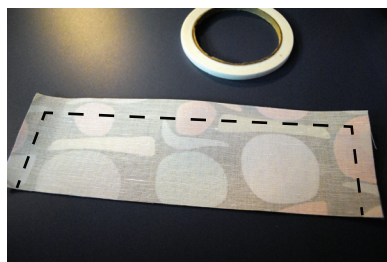
Box the bottom corners and sew 1/2" seam across edge.



Turn your exterior bag right side out and set aside. Let's work on the top zipper now. We will be using the four 3" x 10" exterior pieces (two for each zipper half) and the steam a seam for these steps. Center the zipper, right side down, with the raw edge aligned with the 10" edge of the fabric. Use steam a seam or pins to secure zipper in place for stitching.



Layer second fabric carefully on top (right side down) and pin or iron to secure. Sew 1/2" on each short end and sew along zipper (with zipper foot) on long edge.



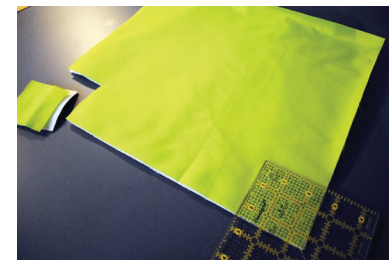
Repeat for second zipper half. Clip corners and turn both pieces right side out. Top stitch around three sides of both zipper parts. Zip parts together, center zipper and cut to 5" width.



Unzip and pin one zipper part, right side together with each side of bag. Pin handle ends in place right sides together with bag.



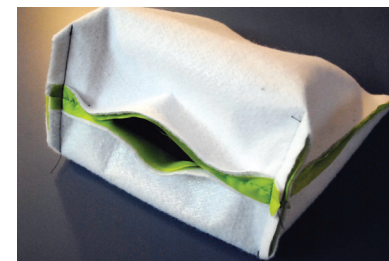
Set aside bag exterior while we work on the lining. Cut two 12" x 14" lining pieces from your nylon ripstop fabric and two from the Insul-bright. Layer and cut two 2 1/2" corners out along the bottom 14" edge.



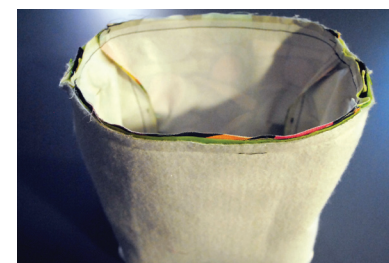
Now place the two ripstop pieces right sides together, sandwiched in between two pieces of Insul-bright. Sew along two sides and a couple inches along the bottom edge at each corner. Leave the corners open and the center of the bottom open (for turning bag later). Trim away excess Insul-bright in the seam to reduce bulk.



Box two corners and sew with 1/2" seam.



Keep lining wrong side out and place your exterior bag inside the lining. This step is a bit tricky with the bulk and the handle inside but just go slow and match up sides at center points and pin well. Sew around top edge with 1/2" seam.



Turn bag right side out and sew lining opening shut.



Enjoy your new Bento Lunch Bag!